

**Solenoid air valve**

Designed for continuous duty in high temperature applications

Technical data

Rated pressure:

145 psi

Thread type:

1/8" NPTF

Operating voltage:

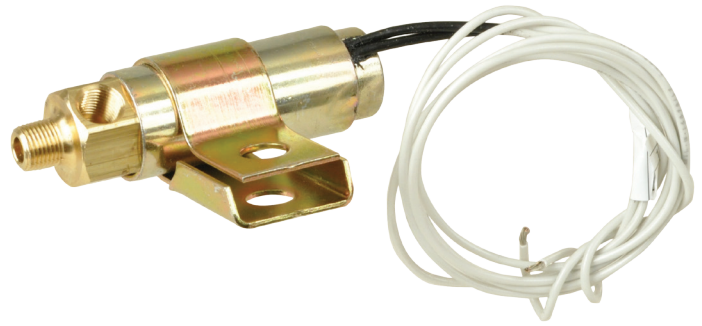
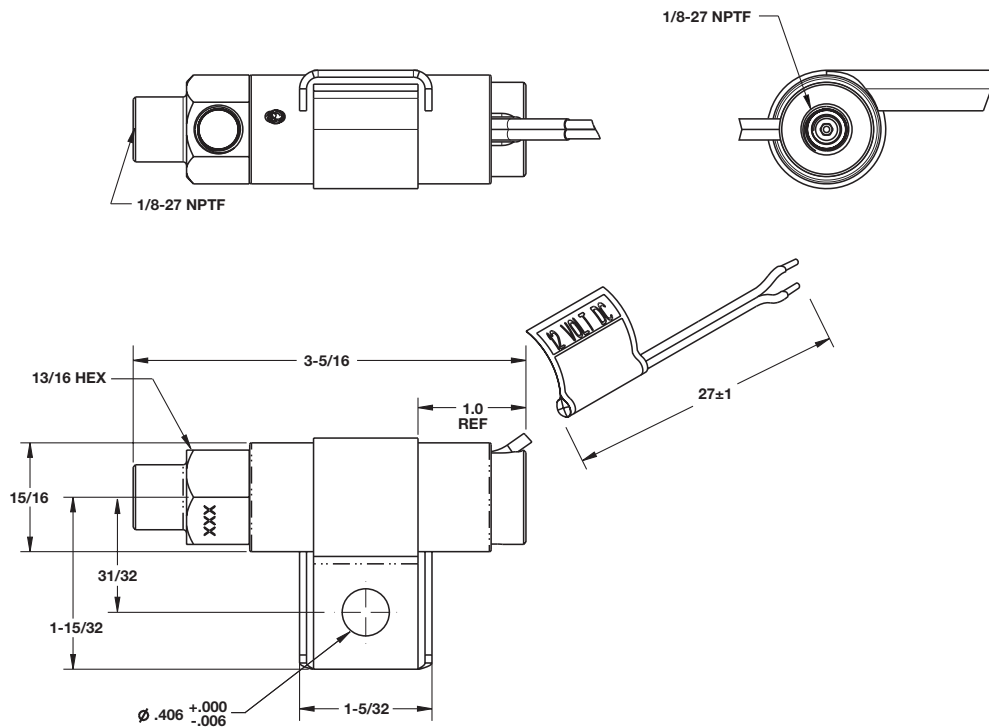
12Vdc

Electrical connector:

Flying lead

Material:

Steel body, Brass manifold, FPM seals

**Dimensions (Inches)****Models**

Model	Port Size	Voltage
85020-0	1/8"-27	12Vdc

Accessories**Commercial Vehicle In-Line Filter**

5050

Commercial Vehicle Exhaust Vent Shield

5060-1